

**Bell & Gossett®**  
Parts List CP-308E-PL



---

Replacement Parts for  
**Bell & Gossett**  
**Series 1535**  
Close Coupled  
Centrifugal Pumps

*Engineered for life*

**SERIES 1535**

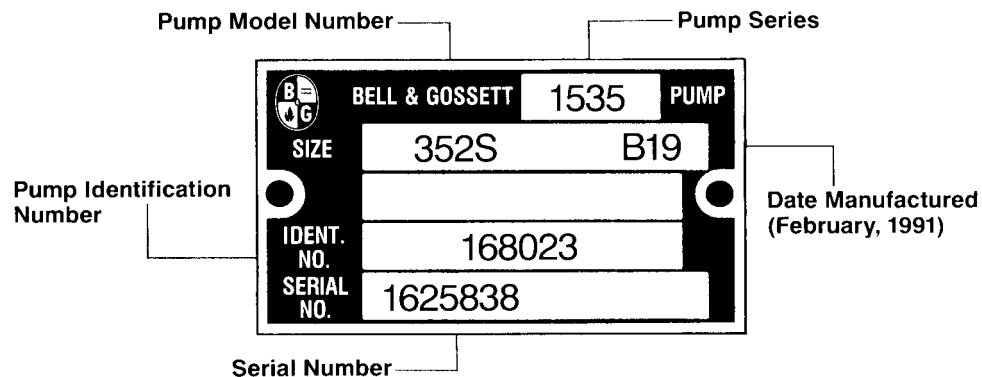
## Index

How to use this Parts List .....	Page 3
1535 Pump Exploded View .....	Page 4
Replacement Parts For Pump Sizes 351-356 .....	Page 5
Replacement Parts For Pump Sizes 357-3511 .....	Page 6



# How to use this PARTS LIST

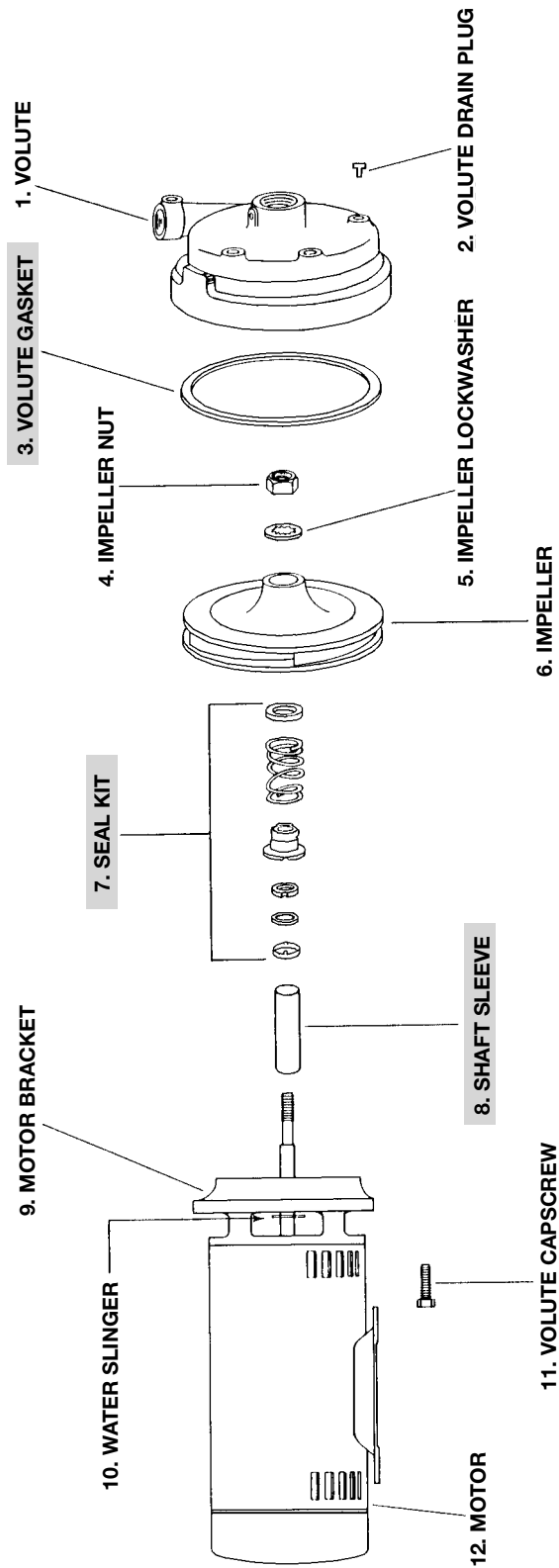
The pump nameplate identifies the pump series, pump model number and identification number as shown below.



The nameplate above identifies the pump as a 1535, model number 352S, with an identification number of 168023. The serial number specifically identifies the unit for future reference. **DO NOT REMOVE THE NAMEPLATE.** It is important when ordering replacement parts to furnish complete nameplate data.

To ensure the correct parts will be selected, follow the procedure below:

1. Determine from the nameplate the pump series and the pump model number.
2. Refer to the index for the page number of the parts breakdown for the specific model pump.
3. Find the proper column in the parts breakdown for the model number involved.
4. Select parts numbers using the drawing on page 4 for parts identification.
5. When replacing the motor, secure all information from the motor nameplate and use to select the proper motor. Always supply complete motor nameplate data when ordering replacement motors.



# Series 1535 Pump

Exploded View

— Factory Recommended Spare Parts

## PUMP MODELS 351 THRU 356

ITEM NO.	DESCRIPTION	351	352	353	354	355	356
1	Volute	186075	186075	186075	186075	186075	186075
2	Volute Drain Plug (4)	P39020	P39020	P39020	P39020	P39020	P39020
3	Volute Gasket	P57410	P57410	P57410	P57410	P57410	P57410
4	Impeller Nut	P00651	P00651	P00651	P00651	P59570	P59570
5	Impeller Lockwasher	P04660	P04660	P04660	P04660	P11220	P11220
6	Impeller	186364*	186363*	186362*	P58250	P58253	P56610
7	Seal Kit	118681	118681	118681	118681	186499	186499
8	Shaft Sleeve	186943	186943	186943	186943	186944	186944
9	Motor Bracket	P62872	P62872	P62872	P62872	P77067	P77067
10	Water Slinger	P77335	P77335	P77335	P77335	P81946	P81946
11	Volute Capscrew (8)	P10620	P10620	P10620	P10620	P10359	P10359
	Motor Capscrew (4)	DJ0063	DJ0063	DJ0063	DJ0063	DJ0063	DJ0063
	Shaft Key	P04945	P04945	P04945	P04945	P51750	P51750

## POWER PACKS

PUMP SIZE	EQUIVALENT SIZE	IMPELLER DIAMETER	1 PHASE 115/230	3 PHASE TRI VOLT	HP
351S & 351T	1" AAB	3 <sup>7</sup> / <sub>16</sub> "	169066	169071	1/3
352S & 352T	1" AAB	4"	169067	169072	1/2
353S & 353T	1" AAB	4 <sup>3</sup> / <sub>8</sub> "	169068	169073	3/4
354S & 354T	1" AAB	4 <sup>9</sup> / <sub>16</sub> "	169069	169074	1
355S & 355T	1" AAB	5"	169216	M99136	1 <sup>1</sup> / <sub>2</sub>
356T	1" AAB	5 <sup>1</sup> / <sub>4</sub> "	—	M99137	2

— Factory Recommended Spare Parts

\*Full size impeller diameter.

See below if impeller needs to be trimmed to a smaller diameter:

For 186364 smaller than 3<sup>7</sup>/<sub>16</sub>" diameter, use P58251

For 186363 smaller than 4" diameter, use P58280

For 186362 smaller than 4<sup>3</sup>/<sub>8</sub>" diameter, use P58252



## PUMP MODELS 357 THRU 3511

ITEM NO.	DESCRIPTION	357	358	359	3510	3511
1	Volute	186087	186087	186087	186087	186087
2	Volute Drain Plug (4)	P39020	P39020	P39020	P39020	P39020
3	Volute Gasket	P57410	P57410	P57410	P57410	P57410
4	Impeller Nut	P00651	P59570	P59570	P59570	P59570
5	Impeller Lockwasher	P04660	P11220	P11220	P11220	P11220
6	Impeller	P58340	P58254	P58255	P58256	P58257
7	Seal Kit	118681	186499	186499	186499	186499
8	Shaft Sleeve	186943	186944	186944	186944	186944
9	Motor Bracket	P62872	P77067	P77067	P77067	P77067
10	Water Slinger	P77335	P81946	P81946	P81946	P81946
11	Volute Capscrew (8)	P10620	P10359	P10359	P10359	P10359
	Motor Capscrew (4)	DJ0063	DJ0063	DJ0063	DJ0063	DJ0063
	Shaft Key	P04945	P51750	P51750	P51750	P51750

## POWER PACKS

PUMP SIZE	EQUIVALENT SIZE	IMPELLER DIAMETER	1 PHASE 115/230	3 PHASE TRI VOLT	HP
357S & 357T	1 1/2" AAB	3 7/16"	169069	169074	1
358S & 358T	1 1/2" AAB	3 11/16"	169216	M99136	1 1/2
359T	1 1/2" AAB	4"	—	M99137	2
3510T	1 1/2" AAB	4 7/16"	—	M99138	3
3511T	1 1/2" AAB	5 1/8"	—	M99139	5

— Factory Recommended Spare Parts

© COPYRIGHT 2008 BY  
ITT CORPORATION  
PRINTED IN U.S.A. 5-08

THE ITT ENGINEERED BLOCKS SYMBOL AND  
ENGINEERED FOR LIFE ARE REGISTERED  
TRADEMARKS OF ITT CORPORATION

**ITT BELL & GOSSETT**  
8200 N. Austin Avenue  
Morton Grove, IL 60053  
Phone: (847) 966-3700  
Fax: (847) 966-9052  
www.bellgossett.com



**CANADA**  
ITT R&CW Canada  
55 Royal Road  
Guelph, Ontario,  
N1H 1T1, Canada  
Phone: (519) 821-1900  
www.ittfpc.ca