



DC24-310-T(A) — Submittal/Technical Data

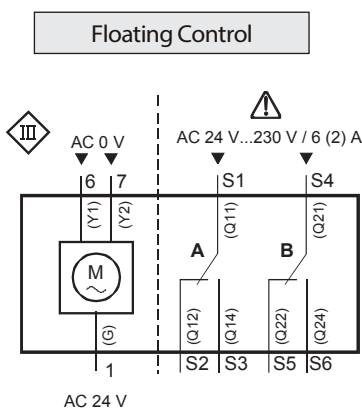
04/22/21

310 lb-in. — Non-Spring Return — Floating— Time Out Feature — Auxiliary Switch Option

Specifications:

Power Supply	DC24-310	24 VAC \pm 20%, at 50/60 Hz
	Power Consumption Running	7 VA 7W
Mechanical Output	DC24-310	310 lb-in (35 Nm)
Feedback Potentiometer		0 to 1,000 Ohms, <10 mA
Dual Auxiliary Switch	Standard Cable	AC, 6 A Resistive, AC 2 A General Purpose
Voltage	Standard Cable	24 to 250 VAC
Switch Range	Switch A	0 to 90° with 5° Intervals (Recommended Range Usage 0 to 45°) Factory Setting 5°
	Switch B	0 to 90° with 5° Intervals (Recommended Range Usage 45 to 90°) Factory Setting 85°
Time Out		Auto shutoff feature to prevent excessive wear or drive time on the motor
Audible Noise Rating		<45 dBA at 1 m
Rotation Range		Nominal Angle of Rotation 90°, mechanically limited to 95° \pm 2°
Rotation Timing		150 sec. at 50 Hz (125 sec. at 60Hz)
Cycle Life		Designed for 60,000 full stroke cycles
Electrical Connection		3 ft. (0.9 m) Pre-cabled - AWG 18
Mechanical Connection		3/8 to 1 in. (9.5 to 25.4 mm) diameter round shaft, 1/4 to 5/8 in. (6 to 18 mm) square shaft Minimum Shaft Length 3/4 (20 mm)
Enclosure		IP54 as per EN 60 529
Manual Override		External Push Button
Ambient Conditions	Operating	-25 to 130°F (-32 to 55°C); 0 to 95% RH, non-condensing
	Storage	-40 to 158°F (-40 to 70°C); 0 to 95% RH, non-condensing
Dimensions (L x W x H)		(L) 11.8" x (W) 3.9" x (H) 2.9 (300 x 100 x 67.5 mm)
Shipping Weight		4.4 lb (2 kg)
Equipment Rating		Class 2 According to UL, CSA - Class III per EN60730
Agency Compliance		UL listed to UL873-cUL certified to Canadian Standard C22.2 No. 24-93 CE conformity: Electromagnetic compatibility 2004/108/EC-Low-voltage directive 2006/95/EC

Wiring: (Standard Cable)



Cable			Function
No.	Code	Color	
1	G	Red (RD)	AC 24 V Supply (SP)
6	Y1	Violet (VT)	Control Signal Clockwise AC 0 V
7	Y2	Orange (OG)	Control Signal AC 0 V Counterclockwise
Auxiliary Switch - Factory Installed			
S1	Q11	Gray/Red (GY RD)	Switch A Input
S2	Q12	Gray/Blue (GY BU)	Switch A - N.C.
S3	Q14	Gray/Pink (GY PK)	Switch A - N.O.
S4	Q21	Black/Red (BK RD)	Switch B Input
S5	Q22	Black/Blue (BK BU)	Switch B - N.C.
S6	Q24	Black/Pink (BK PK)	Switch B - N.O.

NOTE: WARNING: All DC-310 Series actuators are designed for use only in conjunction with operating controls. Where an operating control failure would result in personal injury and/or loss of property, it is the responsibility of the installer to add safety devices or alarm systems that protect against, and/or warn of, control failure.

To avoid excessive wear or drive time on the motor, use a controller and/or software that provides a time-out function to remove the signal at the end of rotation (stall).

The performance specifications are nominal and conform to acceptable industry standards. For application at conditions beyond these specifications, consult the nearest Bray office. Bray controls shall not be liable for damages resulting from misapplication or misuse of its products.