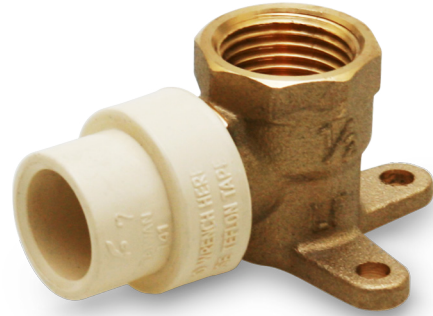


- FEMALE THREADED X CPVC • LEAD FREE • DROP EAR ELBOW

## Features

- Transition fitting for connection threaded pipe with CPVC pipe
- Durable over molded one-piece fitting eliminates potential leak path
- Lead Free Brass material
- Suitable for use in both residential and light commercial plumbing systems
- Molded CPVC end piece with slip connection



## Specifications & Approvals

Pressure Rating: 100 PSI at 180°F  
 Pressure Rating: 150 PSI at 100°F

- NSF/ANSI 61 (2012) Section 8
- NSF/ANSI 61 (2012) Annex F
- NSF/ANSI 61 (2012) Annex G
- NSF/ANSI 372
- Weighted Average Lead Content  $\leq 0.25\%$
- Conforms to material and dimensional requirements of ASTM D-2846
- Threaded ends conform to ASME B 1.20.1
- Stocked in 1/2" - 2"



## Dimensions

Part#	Size	L	K	J
BRCPD012-NL	1/2"	46	25	52

## Material Specifications

Part Name	Material
1. Fitting	C46400 Brass
2. CPVC	CPVC

