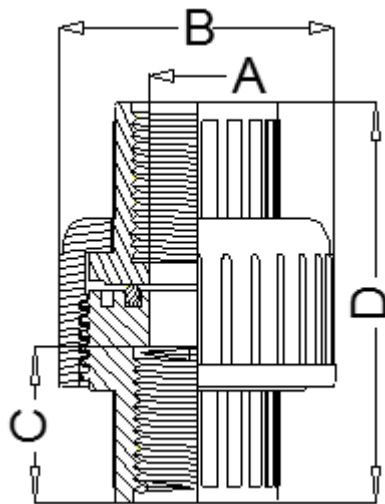


Features

- Fits Schedule 80 Pipe
- Compatible with PVC Piping
- Not Suitable for Compressed Air or Steam Service Applications
- EPDM O-Ring

Specifications & Approvals

150 PSI at 73°F
 Maximum Service Temperature 140°F
 Threaded ends comply with ANSI B1.20.1
 NSF Listed to NSF 14 , 61 & 372



Dimensions

| Part# | Size | A (in) | B (in) | C (in) | D (in) |
|----------|--------|--------|--------|--------|--------|
| 380CU012 | 1/2" | 0.590 | 2.165 | 0.875 | 2.205 |
| 380CU034 | 3/4" | 0.787 | 2.571 | 1.000 | 2.531 |
| 380CU100 | 1" | 0.984 | 2.890 | 1.125 | 2.835 |
| 380CU114 | 1-1/4" | 1.260 | 3.157 | 1.250 | 3.098 |
| 380CU112 | 1-1/2" | 1.576 | 3.653 | 1.375 | 3.425 |
| 380CU200 | 2" | 1.968 | 4.094 | 1.500 | 3.680 |

Materials

| Part Name | Material |
|------------------|----------|
| 1. Nut | PVC |
| 2. End Connector | PVC |
| 3. O-Ring | EPDM |