

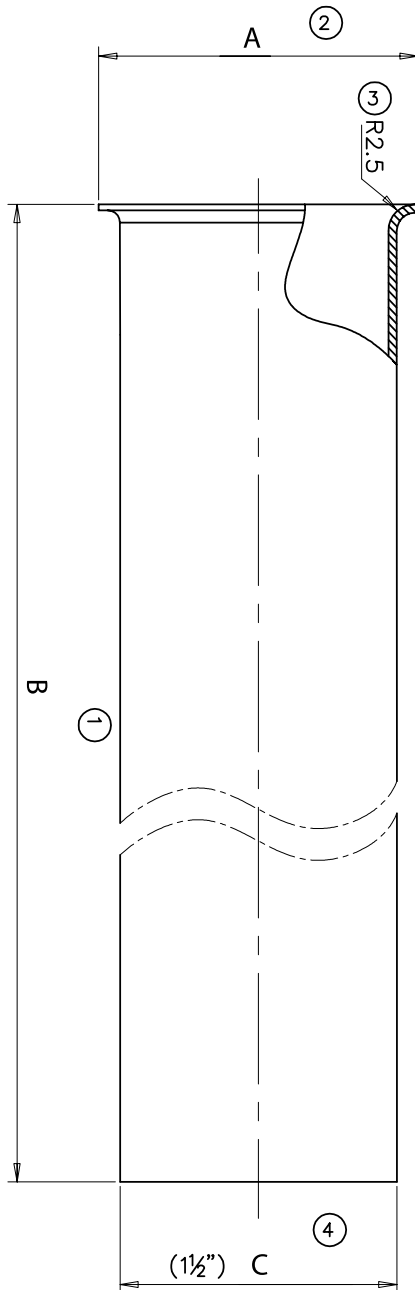
ROUGH BRASS

Features

- Direct Connect
- Rough Brass Finish

Specifications & Approvals

22 Gauge



Dimensions

PART #	SIZE	A	B	C
2236	1-1/2" x 6"	43.70	152.4	38.10

Submittal

Engineer's Approval

Job # _____
 Arch/Eng. _____
 Contractor _____

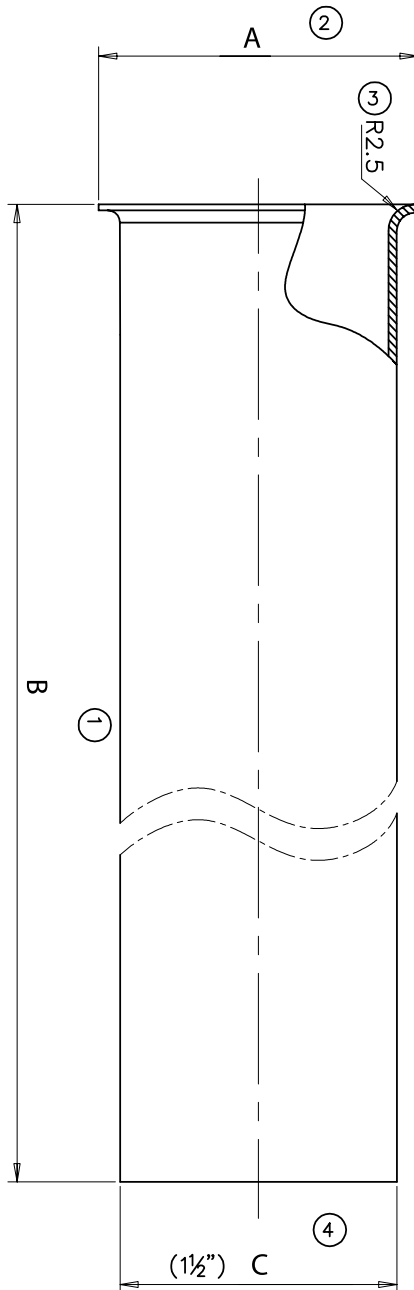
ROUGH BRASS

Features

- Direct Connect
- Rough Brass Finish

Specifications & Approvals

22 Gauge



Dimensions

PART #	SIZE	A	B	C
2238	1-1/2" x 8"	43.70	203.2	38.10

Submittal

Engineer's Approval

Job # _____
 Arch/Eng. _____
 Contractor _____

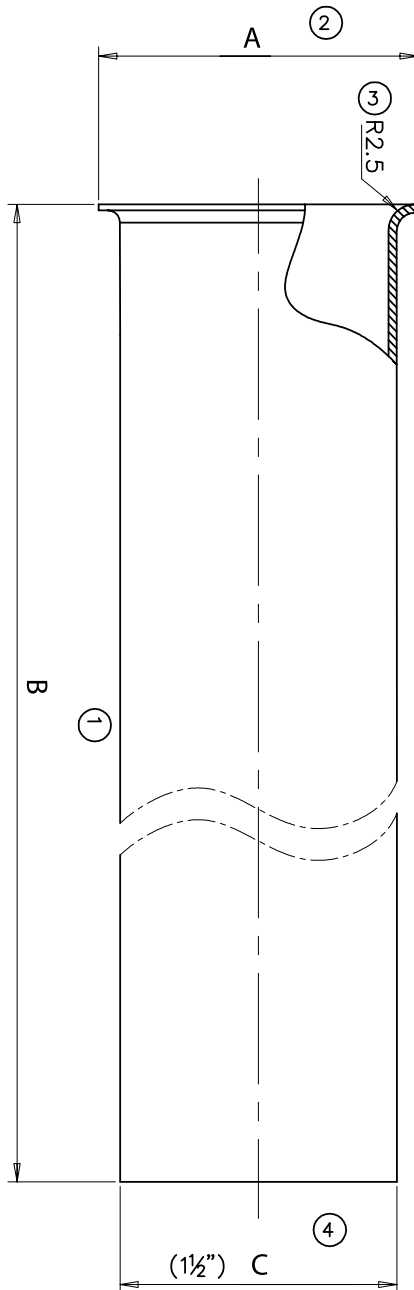
ROUGH BRASS

Features

- Direct Connect
- Rough Brass Finish

Specifications & Approvals

20 Gauge



Dimensions

PART #	SIZE	A	B	C
22312	1-1/2" x 12"	43.70	304.8	38.10

Submittal

Engineer's Approval

Job # _____

Arch/Eng. _____

Contractor _____

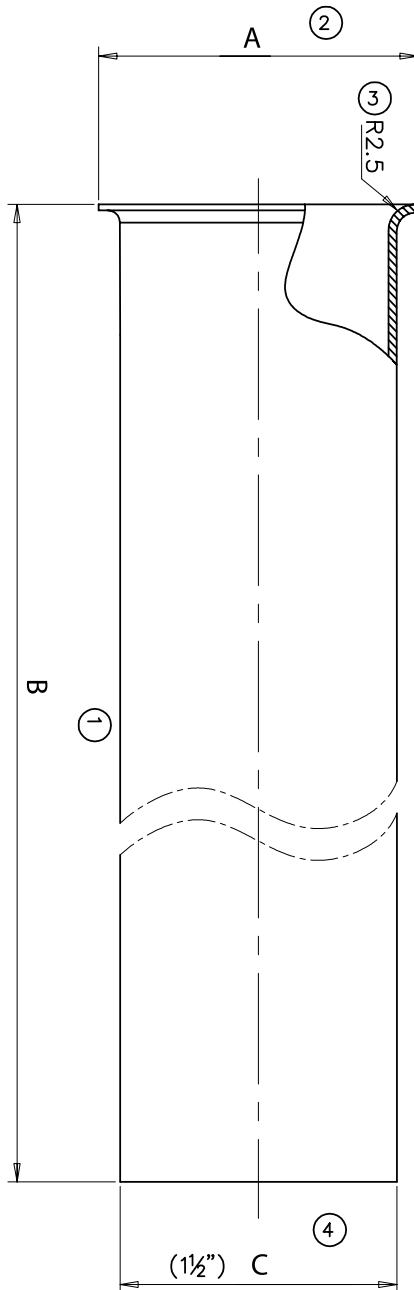
ROUGH BRASS

Features

- Direct Connect
- Rough Brass Finish

Specifications & Approvals

17 Gauge



Dimensions

PART #	SIZE	A	B	C
52312	1-1/2" x 12"	43.70	304.8	38.10

Submittal

Engineer's Approval

Job # _____
 Arch/Eng. _____
 Contractor _____

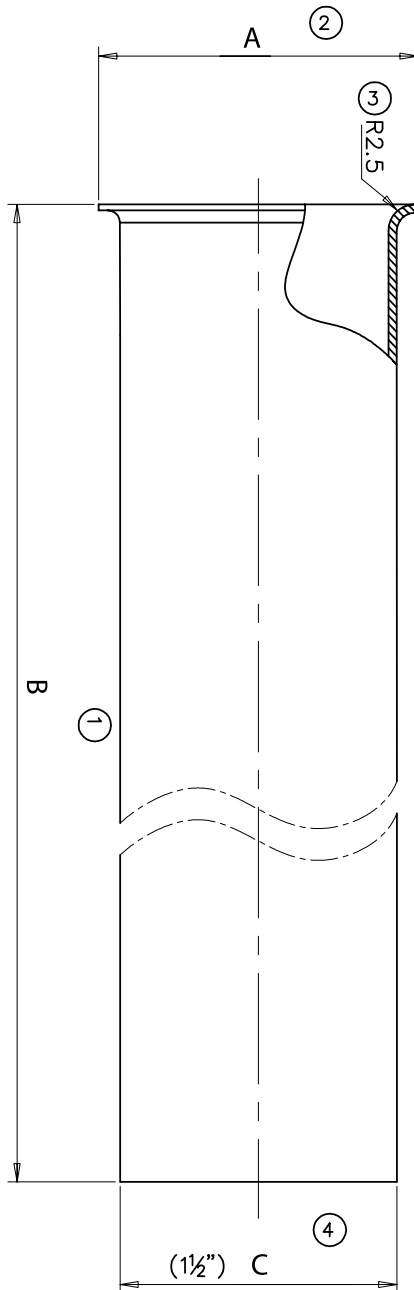
ROUGH BRASS

Features

- Direct Connect
- Rough Brass Finish

Specifications & Approvals

22 Gauge



Dimensions

PART #	SIZE	A	B	C
22324	1-1/2" x 24"	43.70	609.6	38.10

Submittal

Engineer's Approval

Job # _____

Arch/Eng. _____

Contractor _____