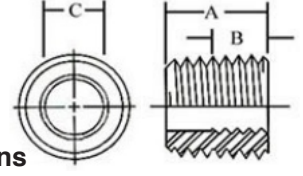
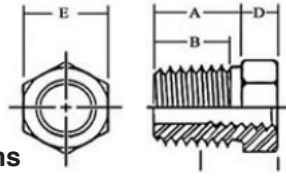
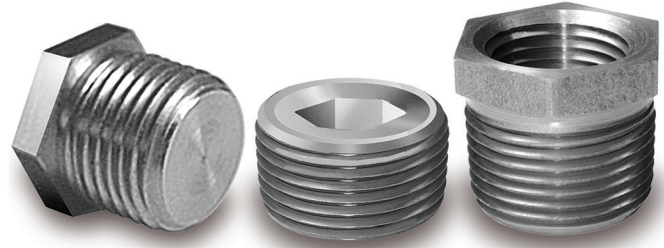


Features

- Hex Bushing in a variety of reducing sizes
- Available in black & galvanized

Specifications & Approvals

Meets or exceeds all applicable ASTM, ANSI and API standards



Steel Hex Bushings Dimensions

| Size | A | B | C | D | E |
|-----------------|------|------|------|------|--------|
| 1/4" x 1/8" | 0.48 | 0.41 | 0.26 | 0.15 | 5/8 |
| 3/8" x 1/8" | 0.50 | 0.43 | 0.25 | 0.16 | 11/16 |
| 3/8" x 1/4" | 0.50 | 0.43 | 0.40 | 0.16 | 11/16 |
| 1/2" x 1/8" | 0.61 | 0.54 | 0.25 | 0.19 | 7/8 |
| 1/2" x 1/4" | 0.61 | 0.54 | 0.32 | 0.19 | 7/8 |
| 1/2" x 3/8" | 0.61 | 0.54 | 0.41 | 0.19 | 7/8 |
| 3/4" x 1/8" | 0.72 | 0.62 | 0.25 | 0.22 | 1-1/16 |
| 3/4" x 1/4" | 0.72 | 0.62 | 0.32 | 0.22 | 1-1/16 |
| 3/4" x 3/8" | 0.72 | 0.62 | 0.36 | 0.22 | 1-1/16 |
| 3/4" x 1/2" | 0.72 | 0.62 | 0.43 | 0.22 | 1-1/16 |
| 1" x 1/8" | 0.75 | 0.67 | 0.25 | 0.25 | 1-5/16 |
| 1" x 1/4" | 0.75 | 0.67 | 0.32 | 0.25 | 1-5/16 |
| 1" x 3/8" | 0.75 | 0.67 | 0.36 | 0.25 | 1-5/16 |
| 1" x 1/2" | 0.75 | 0.67 | 0.43 | 0.25 | 1-5/16 |
| 1" x 3/4" | 0.75 | 0.67 | 0.50 | 0.25 | 1-5/16 |
| 1-1/4" x 1/4" | 0.89 | 0.76 | 0.32 | 0.28 | 1-3/4 |
| 1-1/4" x 3/8" | 0.89 | 0.76 | 0.36 | 0.28 | 1-3/4 |
| 1-1/4" x 1/2" | 0.89 | 0.76 | 0.43 | 0.28 | 1-3/4 |
| 1-1/4" x 3/4" | 0.89 | 0.76 | 0.50 | 0.28 | 1-3/4 |
| 1-1/4" x 1" | 0.89 | 0.76 | 0.58 | 0.28 | 1-3/4 |
| 1-1/2" x 3/4" | 0.91 | 0.83 | 0.50 | 0.31 | 2 |
| 1-1/2" x 1" | 0.91 | 0.83 | 0.58 | 0.31 | 2 |
| 1-1/2" x 1-1/4" | 0.91 | 0.83 | 0.67 | 0.31 | 2 |
| 2" x 1" | 0.96 | 0.88 | 0.58 | 0.34 | 2-1/2 |
| 2" x 1-1/4" | 0.96 | 0.88 | 0.67 | 0.34 | 2-1/2 |
| 2" x 1-1/2" | 0.96 | 0.88 | 0.70 | 0.34 | 2-1/2 |
| 2-1/2" x 1-1/4" | 1.07 | 1.07 | 0.67 | 0.44 | 3 |
| 2-1/2" x 1-1/2" | 1.07 | 1.07 | 0.70 | 0.44 | 3 |
| 2-1/2" x 2" | 1.07 | 1.07 | 0.75 | 0.44 | 3 |
| 3" x 1-1/2" | 1.13 | 1.13 | 0.70 | 0.48 | 3-1/2 |
| 3" x 2" | 1.13 | 1.13 | 0.75 | 0.48 | 3-1/2 |
| 3" x 2-1/2" | 1.13 | 1.13 | 0.92 | 0.48 | 3-1/2 |

Steel Face Bushings Dimensions

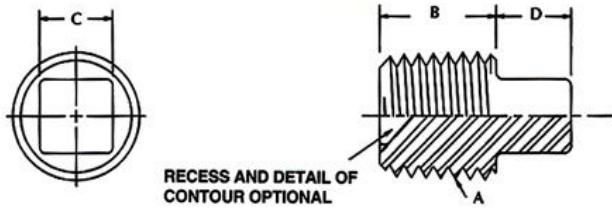
| Size | A | B | C |
|-----------------|------|------|--------|
| 1/4" x 1/8" | 0.44 | 0.25 | 9/16 |
| 3/8" x 1/8" | 0.48 | 0.25 | 11/16 |
| 3/8" x 1/4" | 0.48 | 0.37 | 11/16 |
| 1/2" x 1/8" | 0.56 | 0.25 | 13/16 |
| 1/2" x 1/4" | 0.56 | 0.37 | 13/16 |
| 1/2" x 3/8" | 0.56 | 0.41 | 13/16 |
| 3/4" x 1/8" | 0.62 | 0.25 | 1-1/16 |
| 3/4" x 1/4" | 0.62 | 0.37 | 1-1/16 |
| 3/4" x 3/8" | 0.62 | 0.41 | 1-1/16 |
| 3/4" x 1/2" | 0.62 | 0.50 | 1-1/16 |
| 1" x 1/4" | 0.75 | 0.37 | 1-5/16 |
| 1" x 3/8" | 0.75 | 0.41 | 1-5/16 |
| 1" x 1/2" | 0.75 | 0.50 | 1-5/16 |
| 1" x 3/4" | 0.75 | 0.52 | 1-5/16 |
| 1-1/4" x 1/2" | 0.81 | 0.50 | 1-3/4 |
| 1-1/4" x 3/4" | 0.81 | 0.52 | 1-3/4 |
| 1-1/4" x 1" | 0.81 | 0.62 | 1-3/4 |
| 1-1/2" x 3/4" | 0.83 | 0.52 | 1-7/8 |
| 1-1/2" x 1" | 0.83 | 0.62 | 1-7/8 |
| 1-1/2" x 1-1/4" | 0.83 | 0.77 | 1-7/8 |

Features

- Stocked 1/8"-3/4"
- Available in black & galvanized

Specifications & Approvals

Meets or exceeds all applicable ASTM, ANSI and API standards



Dimensions

| Size | A | B | Threads/in | Threads |
|------|-------|------|------------|---------|
| 1/8" | 0.563 | 0.38 | 27 | NPSC |
| 1/4" | 0.719 | 0.57 | 18 | NPSC |
| 3/8" | 0.875 | 0.57 | 18 | NPSC |
| 1/2" | 1.063 | 0.75 | 14 | NPSC |
| 3/4" | 1.313 | 0.79 | 14 | NPSC |