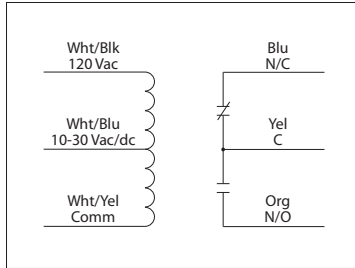


## 10 AMP PILOT CONTROL RELAYS

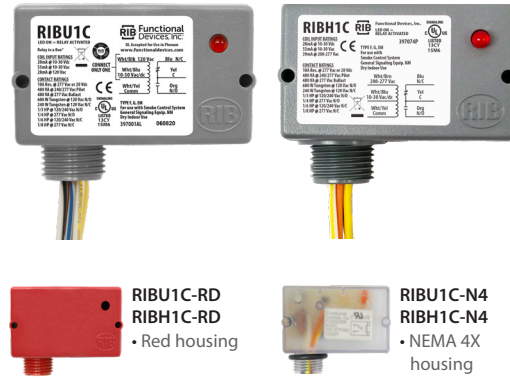
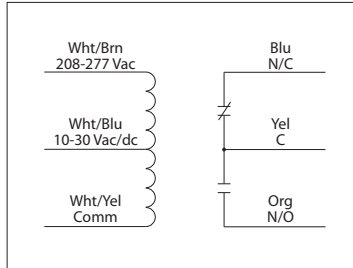
### RIBU1C

Pilot Relay, 10 Amp SPDT, 10-30 Vac/dc/  
 120 Vac Coil, NEMA 1 Housing



### RIBH1C

Pilot Relay, 10 Amp SPDT, 10-30 Vac/dc/  
 208-277 Vac Coil, NEMA 1 Housing



## SPECIFICATIONS

- # Relays & Contact Type:** One (1) SPDT Continuous Duty Coil
- Expected Relay Life:** 10 million cycles minimum mechanical
- Operating Temperature:** -30 to 140° F
- Humidity Range:** 5 to 95% (noncondensing)
- Operate Time:** 20ms
- Relay Status:** LED On = Activated
- Dimensions:** 1.70"H x 2.80"W x 1.50"D with 0.50" NPT nipple
- Housing Detail:** See **Housing A** in housing guide for dimensions
- Origin:** Made of US and non-US parts
- Wires:** 16", 600V Rated
- Approvals:** UL Listed, C-UL, CE, RoHS (All models)  
 UL916 (RIBU1C, RIBH1C)  
 UL864, California State Fire Marshal (RIBU1C-RD, RIBH1C-RD)  
 UL508 (RIBU1C-N4, RIBH1C-N4)
- Housing Rating:** UL Accepted for Use in Plenum, NEMA 1
- Gold Flash:** Yes
- Override Switch:** No

- Contact Ratings:**  
 10 Amp Resistive @ 277 Vac  
 10 Amp Resistive @ 28 Vdc  
 480 VA Pilot Duty @ 240-277 Vac  
 480 VA Ballast @ 277 Vac  
*Not rated for Electronic Ballast*  
 600 Watt Tungsten @ 120 Vac (N/O)  
 240 Watt Tungsten @ 120 Vac (N/C)  
 1/3 HP @ 120-240 Vac (N/O)  
 1/6 HP @ 120-240 Vac (N/C)  
 1/4 HP @ 277 Vac (N/O)  
 1/8 HP @ 277 Vac (N/C)

**Note:**  
 Order packs by adding "-5PACK", "-10PACK", "-25PACK", or "-100PACK" to end of model number.

- Coil Current:**  
 33 mA @ 10 Vac  
 35 mA @ 12 Vac  
 46 mA @ 24 Vac  
 55 mA @ 30 Vac  
 28 mA @ 120 Vac (RIBU1C)  
 39 mA @ 208-277 Vac (RIBH1C)  
 13 mA @ 10 Vdc  
 15 mA @ 12 Vdc  
 18 mA @ 24 Vdc  
 20 mA @ 30 Vdc
- Coil Voltage Input:**  
 10-30 Vac/dc; 120 Vac; 50-60 Hz (RIBU1C)  
 10-30 Vac/dc; 208-277 Vac; 50-60 Hz (RIBH1C)  
 Drop Out = 2.1 Vac / 2.8 Vdc  
 Pull In = 9 Vac / 10 Vdc