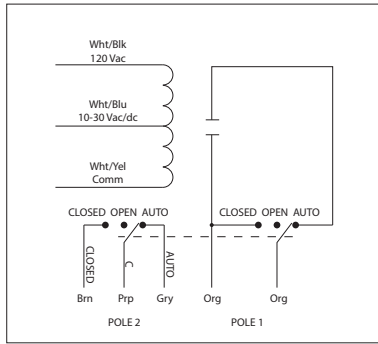


10 AMP PILOT CONTROL RELAYS

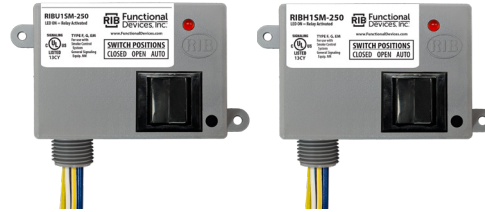
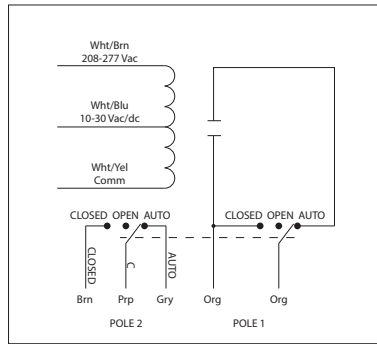
RIBU1SM-250

Pilot Relay, 10 Amp SPST-N/O + Override + Monitor, 10-30 Vac/dc/120 Vac Coil, NEMA 1 Housing



RIBH1SM-250

Pilot Relay, 10 Amp SPST-N/O + Override + Monitor, 10-30 Vac/dc/208-277 Vac Coil, NEMA 1 Housing



SPECIFICATIONS

- # Relays & Contact Type:** One (1) SPST Continuous Duty Coil
- Expected Relay Life:** 10 million cycles minimum mechanical
- Operating Temperature:** -30 to 140° F
- Humidity Range:** 5 to 95% (noncondensing)
- Operate Time:** 20ms
- Relay Status:** LED On = Activated
- Dimensions:** 2.39"H x 3.31"W x 1.81"D with 0.50" NPT nipple
- Housing Detail:** See **Housing B** in housing guide for dimensions
- Origin:** Made of US and non-US parts
- Wires:** 16", 600V Rated
- Approvals:** UL Listed, UL916, C-UL, CE, RoHS
- Housing Rating:** UL Accepted for Use in Plenum, NEMA 1
- Gold Flash:** Yes
- Override Switch:** Yes + Monitor

- Contact Ratings:**
- 10 Amp Resistive @ 120/250 Vac
- 345 VA Pilot Duty @ 120/240 Vac
- 211 VA Pilot Duty @ 120/240 Vac
- 1/3 HP @ 120-240 Vac (N/O)
- 1/6 HP @ 120-240 Vac (N/C)

- Coil Current:**
- 55 mA @ 30 Vac
- 28 mA @ 120 Vac (RIBU1SM-250)
- 39 mA @ 208-277 Vac (RIBH1SM-250)
- 20 mA @ 30 Vdc

- Coil Voltage Input:**
- 10-30 Vac/dc ; 120 Vac ; 50-60 Hz (RIBU1SM-250)
- 10-30 Vac/dc ; 208-277 Vac ; 50-60 Hz (RIBH1SM-250)
- Drop Out = 2.1 Vac / 2.8 Vdc
- Pull In = 9 Vac / 10 Vdc

- Notes:**
- Second pole of override switch can be connected to digital-in of controller to report position of override switch
- Rating of second pole is 250 Vac max and 5 Amp max
- Order Normally Closed by adding "-NC" to end of model number