

W351P Series

Electronic Proportional Plus Integral Humidity Control

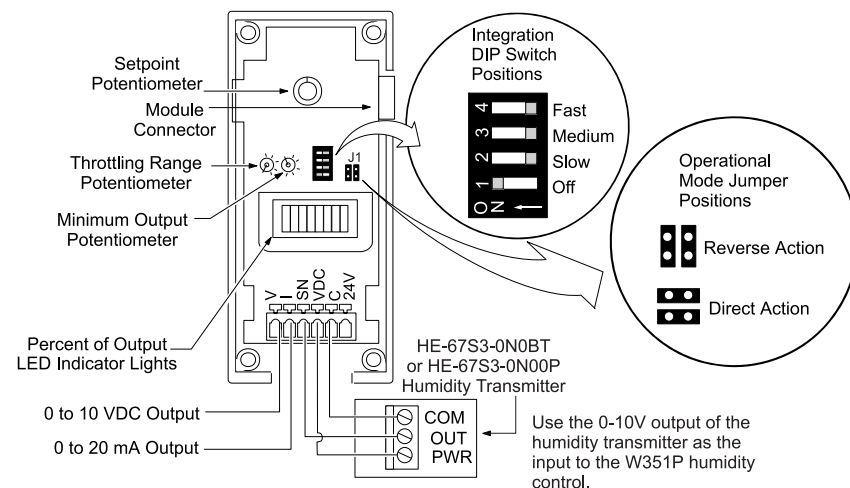
Description

The W351P Electronic Humidity Control series has proportional outputs of 0 to 10 VDC and 0 to 20 mA. Proportional plus integral (PI) control is an option to hold setpoint regardless of load shifts on a system. The control covers a range of 10 to 90% RH and has adjustments for setpoint, integration constant, throttling

range, minimum output, and mode (humidification or dehumidification). This control is used in conjunction with the HE-67S3-0N0BT or HE-67S3-0N00P series of humidity transmitters. The S351 Stage Module, Y350R Power Module, and D351 Display Module can be used with the W351P.



W351P



Interior of W351P

Features

- field selectable proportional only or proportional plus integral control
- surface or DIN rail mounting
- ten segment LED displays percent of output signal
- field selectable humidification or dehumidification mode
- minimum output adjustment
- 5-pin connectors eliminate wiring between modules

Applications

Use for modulating steam valves for humidification.

Selection Chart

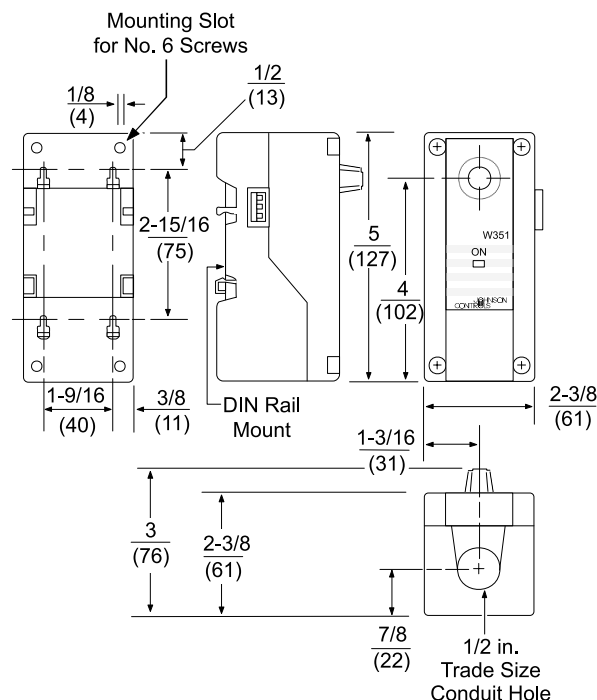
Code Number	Output	Humidity Range	Throttling Range	Humidity Transmitter
W351PP-1C	Proportional Voltage:	10 to 90% RH	2 to 20% RH	none
W351PN-1C	0 to 10 VDC and			HE-67S3-0N0BT (included)
W351PN-2C	Proportional Current: 0 to 20 mA			HE-67S3-0N00P (included)

Note: Order the corresponding humidity transmitter separately. Staging, power, and display modules can be ordered optionally, if required.

Technical Specifications

W351P Electronic Proportional Plus Integral Static Pressure Control		
Supply Voltage ¹	Transformer	20 to 30 VAC, 50/60 Hz, Class 2
	Y350R	120/240 VAC, 50/60 Hz
Sensor Input Range		0 to 10 VDC, corresponding to 0 to 100% RH
Proportional Output		0 to 10 VDC (550 ohm load minimum) and 0 to 20 mA (600 ohm load maximum).
Minimum Output		Adjustable to 0 to 60% of full output span
Output Indication		A ten segment LED bar graph indicates percentage of output
Control Action		Direct or reverse action is jumper selectable
Power Consumption		3.2 VA maximum
Integration Constant		Three selectable rates Fast, Medium, Slow, and Off position
Ambient Temperature	Operating	-30 to 150°F (-34 to 66°C)
	Shipping	-40 to 185°F (-40 to 85°C)
Ambient Humidity		0 to 95% RH non-condensing
Case and Cover Material		NEMA 1 high-impact thermoplastic

1. Only one input voltage source may be used.



W351P Dimensions, in. (mm)