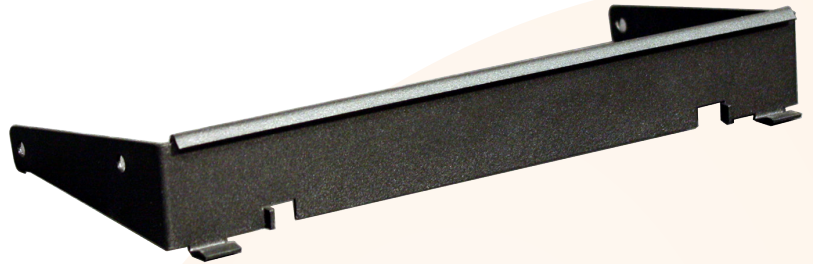


### Applications

Safely and securely mount a WiNG-MGR to any 35mm DIN rail with this custom designed powder coated steel bracket.

### Key Features

- o High quality construction
- o Custom engineered to fit the WiNG-MGR
- o Snaps into place for a secure installation



### WiNG Monitoring, Right Where You Need It

Every wireless monitoring installation is unique - that's why we've designed a DIN rail mount bracket to fit our popular WiNG-MGR controller.

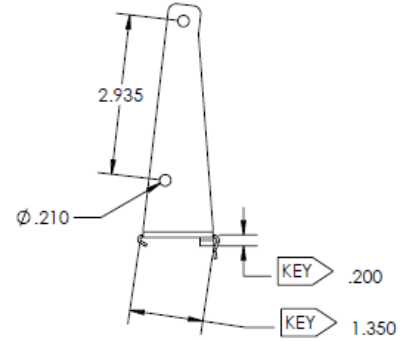
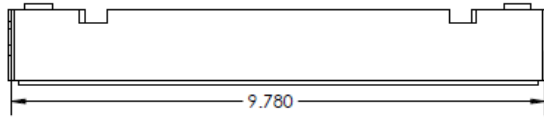
### What Sets RLE's WiNG-MGR DRM Apart?

- o **Custom designed by RLE's engineering team**, this bracket securely and safely houses the WiNG-MGR.
- o **Powder coated steel** ensures durability and reliability, and matches the WiNG-MGR enclosure.
- o **Fits any 35mm DIN rail** for a seamless integration into any facility.
- o **Easy to install** - just place the long folded metal edge on top of the DIN rail, and then press until the mounting tabs at the bottom of the mount click into place.

# WiNG-MGR DRM • Compatible with the WiNG-MGR

## Product Codes

WiNG-MGR DRM    DIN Rail mount for WiNG -MGR - compatible with 35mm DIN rail



## Technical Specifications

Materials	Powder coated steel
DIN Rail Compatibility	Fits 35mm DIN rail
Dimensions and Weight	9.78"W x 4.23"D (24.8cmW x 10.74cmD), 0.30lb (0.14kg)

