

HTOR Value Series

Recessed Wall Humidity/Temperature

LCD 2% or 3% accuracy
0-5/10V/4-20mA RH/Temp (thermistors optional)
Durable and attractive low-profile design



DESCRIPTION

The HTOR series is designed for use in energy management systems in buildings. It combines excellent stability with reliable operation. Thermistor options accommodate any installation.

APPLICATIONS

- HVAC room humidity and temperature measurement and control
- Energy management/building control

FEATURES

Attractive recessed design is attractive and durable

- Fits in most standard wall plates
- No exposed screws; unobtrusive tamper resistant design
- Ideal for schools

Simple yet versatile

- 45° terminals for ease of wiring
- Gasket included for more accurate readings
- Easy installation saves time and callbacks

Choose from a range of accuracy and options

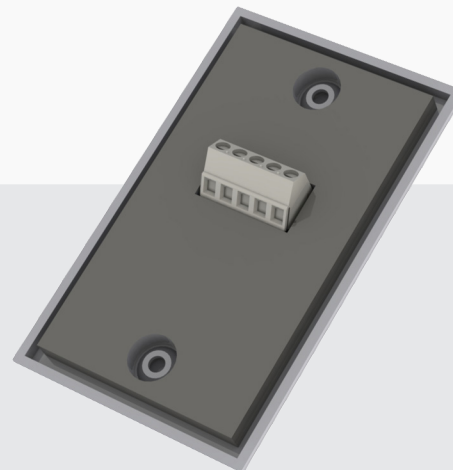
- 2%, 3% RH accuracy options
- Thermistor outputs for temperature optional
- 0-5V, 0-10V, 4-20mA 2-wire, or 3-wire options available
- Options for any job

Superior RH sensing

- On-board temperature compensation for RH
- Eliminates temperature coefficient errors and achieves an excellent measurement accuracy as well as high repeatability and offset stability.
- Achieve better accuracy for more efficient control

Easy Wiring

- Streamlined enclosure design and 45° terminals ensure quick and simple installation



ORDERING

HT0R -

Accuracy

2 = 2%
3 = 3%

Output Type

A = 0-5VDC, 3-wire
B = 0-10VDC, 3-wire
C = 4-20mA, 2-wire
D = 4-20mA, 3-wire

Temperature

A = None
C = 100Pt (385)
D = 1000Pt (385)
E = 10k type 2
F = 10k type 3
G = 10k type 3 w/11k shunt
H = 3k
I = 2k2
J = 1k8
K = 20k
L = 100k

Customize it!

HT0R-(Your name here)

SPECIFICATIONS

Power Supply		12-30VDC/24VAC ⁽¹⁾ , 24mA max
Output	RH%	3-wire 0-5, 10V ⁽⁴⁾ , or 4-20mA, 2-wire 4-20mA(optional)
Output scaling	RH%	0-100% RH
Thermistor Options		Yes, see ordering table on left
Media filter		PTFE membrane, IP54 protection
Relative Humidity	Accuracy	2% models, ±2% over 0 to 100% RH Range; ±1.5% typ 3% models, ±3% over 0 to 100% RH Range; ±2% typ
	Resolution	0.01%RH
	Hysteresis	±0.8%RH
	Non-Linearity	factory linearized <1%RH
	Temperature coefficient	fully compensated by on-board temp sensor
	Response time ⁽²⁾	8s
	Output update rate	0.5s
	Operating range	0 to 100%RH (non-condensing)
	Long term drift	<0.25%RH per year
	Element Normal Operating conditions ⁽³⁾	41 to 140°F (5°C to 60°C) @ 20% to 80% RH
Enclosure	Dimensions	5.7”h x 3.0”w x 1.7”d
	Unit Temp Rating	-40 to 158°F (-40 to 70°C)

(1) One side of transformer, secondary is connected to signal common. Dedicated transformer is recommended.

(2) Time for reaching 63% of reading at 25°C and 1 m/s airflow.

(3) Long term exposures to conditions outside normal range at high humidity may temporarily offset the RH reading (+3%RH after 60 hours).

(4) 15-30VDC/24VAC power supply voltage required for 10 volt output.

FULLY CUSTOMIZABLE

Sell your brand of sensor

- Private label with low up-front cost
- Minimum order of only 10 units
- Market your brand, your service
- Direct all service calls to you

Professional look and feel

- Color printed with UV ink
- No bulky, cheap-looking stickers
- High quality, long lasting marketing

Call for a sample today!

