

Drywall Mounting Kit for Roughing-in Before Drywall is Up

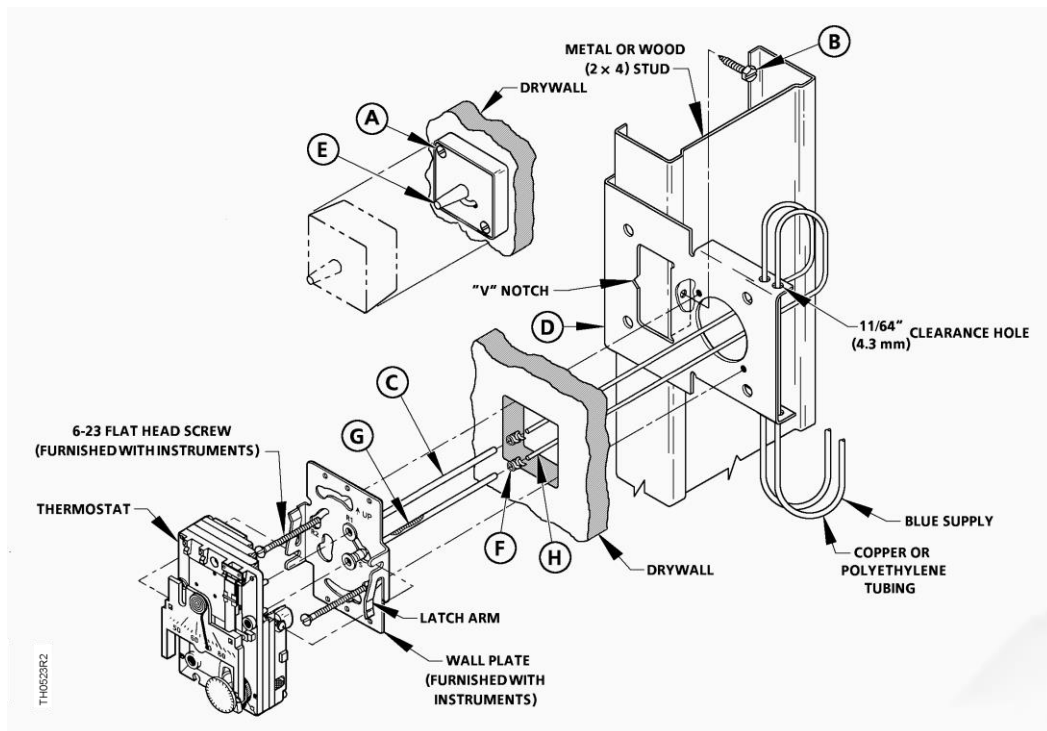


Figure 1.

Product Description

This kit was designed to be used on metal studs (metal 2 × 4s) but can also be used on conventional wooden 2 × 4s.

The quick mounting bracket (D) provided with this kit permits it to be fastened securely to the stud with a single self-tapping sheet metal screw. As shown in *Figure 2*, the bracket can be mounted on either side of the stud. Ideally, the self-tapping screw should always be driven through the appropriate flange on the bracket so that the screw point bears against or pierces the solid (as opposed to open) side of the stud. However, if the situation requires it, the screw can be driven through the opposite flange and into the lip on the open side of the stud.

Product Numbers

182-683 Metal/Wood Stud Bracket

Contents

The drywall kit for installations where roughing-in can be done before drywall is up consists of:

- A No. 6-32 × 1-inch-long flat head steel screw (2)
- B No. 10 × 3/4-inch-long type "A" hex head screw
- C Connecting tube – 9-1/2 inch long
- D Drywall mounting bracket
- E Locator
- F Tube retainer (2)
- G Coil
- H Copper tubing - 8 feet

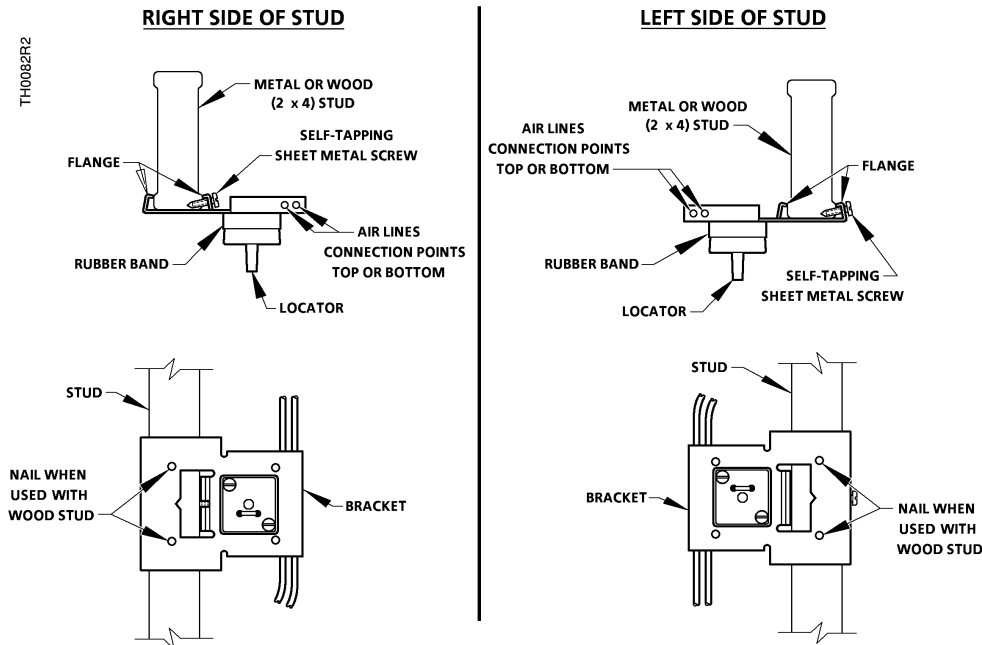


Figure 2. Drywall Mounting Bracket Positions.

Installation

A typical installation procedure consists of the following steps:

Roughing-in before drywall is up

1. Attach drywall mounting bracket (D) to stud, per position selected at the desired location. "V" notch on bracket indicates centerline of instrument to be mounted.
2. Make all air line connections to the bracket. For installations with 1/4-inch O.D. polyethylene tubing, it is necessary to use tubing terminal kit 192-481 to adapt to the connections at the wall plate. In this case, after the tubing terminal kit is attached to the 1/4-inch tubing, it must be tied to the locator (E) using a wire tie. Leave at least 4 to 6 inches of slack in terminal tubing since it must be pulled into the room at a later stage and attached to the wall plate.

3. Notify drywall installer to make a square hole (1-5/8 x 1-5/8 inches) in the drywall so locator (E) can project through the wall into the room.

After installing the drywall

1. After drywall is finished, remove locator (E) using screwdriver to remove two screws (A) and lightly rocking locator while pulling to free it from the plaster.
2. Removal of locator will pull out terminal tubing. The terminal tubing has a supply (blue) and a return plug-in adapter connected with an air link. This provides a pressure-tight connection between supply and return for testing air lines for leakage.
3. Install wall plate on bracket (D) using screws furnished with the instrument. Note that the wall plate has key slotted holes to allow insertion of screws prior to installation of wall plate and to allow leveling of the wall plate.

The installation is now complete and ready to accept a thermostat.

Information in this publication is based on current specifications. The company reserves the right to make changes in specifications and models as design improvements are introduced. Product or company names mentioned herein may be the trademarks of their respective owners. © 2009-2022 Siemens Industry, Inc.