

SW 786 Selector Switches

Product Description

The SW 786 Selector Switches are used to deliver or stop the flow of compressed air to selected controllers, valves, or dampers.

Product Numbers

Two-position Switch 786-0600
 Three-position Switch 786-0610

Required Tools

- Adjustable wrench
- Drill for surface mounting
- Flat-blade screwdriver for surface mounting

Expected Installation Time

30 minutes

Prerequisites

- **For panel mounting:** 1-7/32 inch (31 mm) diameter hole in panel for switch body and 1/8-inch (3.2 mm) hole for index pin. See detail in *Figure 1*. For new installations request cabinet cut-out S-3.
- **For surface mounting:** Mounting bracket kit 786-131. Order separately.

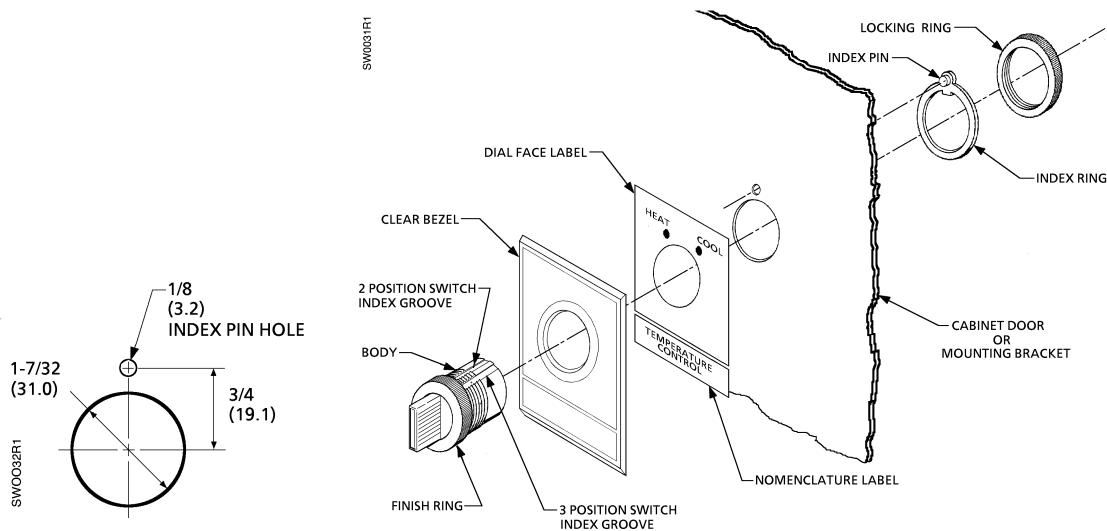


Figure 1. Mounting of the SW 786 Selector Switch.

Installation

Panel mounting

1. Insert the provided tubing connectors into ports on the back of the switch body. See *Figure 2*.
2. Select the appropriate dial face label and nomenclature label from the sheet provided.
3. Remove the body locking ring and the index ring.

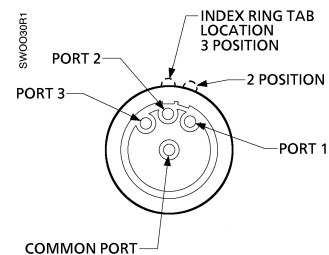


Figure 2. Positioning Switch Ports.

4. Place dial face label and the nomenclature label face down in the clear plastic bezel. Insert the switch body through the bezel, labels, and the panel cutout.

Installation, Continued

- Place the index ring over the switch body with the index pin facing the back of the panel. Align the appropriate index groove on the switch body with the index tab on the index ring. See *Figure 1*.
- Snap the index pin into the small hole. Secure the switch assembly with the locking ring.
- Pipe the selector switch noting that the center port is the supply port (*Figure 2*).

Surface mounting

- Using the bracket as a template, drill holes for mounting the bracket. See *Figure 3*. Mount the bracket.
- Insert the provided tubing connectors into ports on the back of the switch body. See *Figure 2*.
- Remove the body locking ring and the index ring. Insert the tubing through the rings and the opening in the mounting bracket from the back.
- Select the appropriate dial label and nomenclature label from the sheet provided.
- Insert the switch body through the clear plastic bezel and the dial label. Attach the tubing to the appropriate ports. The center port is the supply port. See *Figure 2*.

- Place the nomenclature label face down in the clear plastic bezel. Align the bezel and labels with the opening in the mounting bracket. Insert the switch body from the front. See *Figure 1*.
- Place the index ring over the switch body with the index pin facing the back of the mounting bracket. Align the appropriate index groove on the switch body with the index tab on the index ring. See *Figure 1*.
- Snap the index pin into the small hole in the bracket. Secure the switch assembly with the locking ring.

Table 1. Switch Connections.

Position	Connection
Two Position Switch	
Counterclockwise	Common to Port 1
Clockwise	Common to Port 2
Three Position Switch	
Counterclockwise	Common to Port 1
Center	Common to Port 2
Clockwise	Common to Port 3

References

SW 786-2	155-118P25
TB 196 Cabinet Cut-outs	155-223P25
CP 567-7 Pneumatic Control Cabinets	155-272P25
TB 197 How to Layout a Pneumatic Cabinet Door	155-224P25

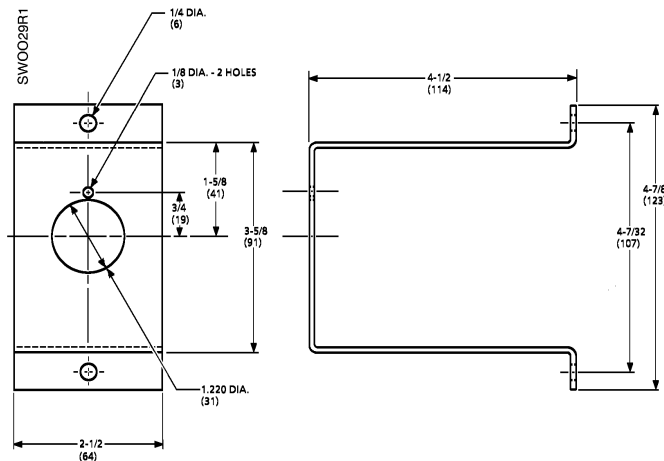


Figure 3. Surface Mounting Bracket.

Information in this publication is based on current specifications. The company reserves the right to make changes in specifications and models as design improvements are introduced. Product or company names mentioned herein may be the trademarks of their respective owners. © 2009 Siemens Industry, Inc.