



Split-Core Current Transformers

Small, Medium and Large Sizes

Description

Siemens Split-Core Current Transformers (CTs) provide linear output voltage that is directly proportional to the input current. These transformers are safely and easily installed over existing electrical power lines without disconnecting the lines or interrupting service.

Siemens energy monitoring components are used for a variety of applications including building automation, tenant submetering, performance verification, energy management, and new technology assessment. These devices are targeted for use with the Siemens MD Series Power Meters.

Features

- Available with three window sizes:
 - Small: 0.75" (1.9 cm)
 - Medium: 1.25" (3.2 cm)
 - Large: 2.0" (5.1 cm)
- Available in six current ranges:

Model	Current Range
50A, Small	5 to 65A AC
100A, Small	2 to 130A AC
100A, Medium	5 to 130A AC
200A, Medium	4 to 260A AC
400A, Medium	8 to 520A AC
600A, Medium	12 to 780A AC
600A, Large	30 to 780A AC
1000A, Large	20 to 1300A AC
- Output: 333 mV at rated current

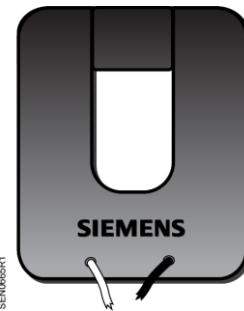
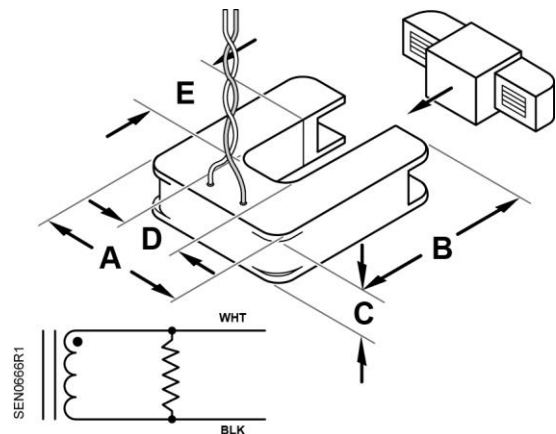


Table 1. CT Dimensions.

CT Size	Part Number	Dimensions in Inches (cm)				
		A	B	C	D	E
Small	SCT-SCS-0050-U	2.0	2.1	0.6	0.75	0.75
	SCT-SCS-0100-U	(5.1)	(5.4)	(1.6)	(1.9)	(1.9)
Medium	SCT-SCM-0100-U	3.25	3.35	1.00	1.25	1.25
	SCT-SCM-0200-U	(8.3)	(8.5)	(2.5)	(3.2)	(3.2)
	SCT-SCM-0400-U					
	SCT-SCM-0600-U					
Large	SCT-SCL-0600-U	4.8	5.0	1.2	2.0	2.0
	SCT-SCL-1000-U	(12.1)	(12.7)	(3.1)	(5.1)	(5.1)



Specifications

Electrical	Output Signal	333 mV at rated current
	Wire Colors	White = (+) Hi, positive Black = (-) Low, negative
	Frequency Range	50 Hz to 400 Hz
	Phasing Orientation	Arrow points towards load
	Ratio Error	<1% at rated current (typical)
	Phase Error at rated current (typical)	SCT-SCS-xxxx-U <4° SCT-SCM-xxxx-U <2.2° SCT-SCL-xxxx-U <1°
Mechanical	Case Material	Epoxy encapsulated housing
	Leads	9.8 feet (3 m), twisted pair, 20 AWG
	Operating temperature	Maximum 105°F (220°C)
	Weight	SCS 4.8 oz (136 g) SCM 12.0 oz (340 g) SCL 26.0 oz (748 g)
Safety	Working Voltage	600 Vac, Category III
	Dielectric Strength	5000 Vac around case 600 Vac rated leads
	Certifications	ETL certified to UL Standard 61010-1 cETL certified to CAN/CSA Standard C22.2 No. 61010-1
	CE Conformity	CE Low Voltage Directive 2006/95/EC

Ordering Information

Part Number	Description
SCT-SCS-0050-U	Small Split-Core CT; 0.75" (19 mm) Opening; 50A
SCT-SCS-0100-U	Small Split-Core CT; 0.75" (19 mm) Opening; 100A
SCT-SCM-0100-U	Medium Split-Core CT; 1.25" (32 mm) Opening; 100A
SCT-SCM-0200-U	Medium Split-Core CT; 1.25" (32 mm) Opening; 200A
SCT-SCM-0400-U ¹	Medium Split-Core CT; 1.25" (32 mm) Opening; 400A
SCT-SCM-0600-U	Medium Split-Core CT; 1.25" (32 mm) Opening; 600A
SCT-SCL-0600-U ²	Large Split-Core CT; 2.00" (51 mm) Opening; 600A
SCT-SCL-1000-U	Large Split-Core CT; 2.00" (51 mm) Opening; 1000A

- 1) Included in MD Model Power Meter Kits numbers MD-xxx-3-CTSC-400A.
- 2) Included in MD Model Power Meter Kits numbers MD-xxx-3-CTSC-600A.

Information in this document is based on specifications believed correct at the time of publication. The right is reserved to make changes as design improvements are introduced. Product or company names mentioned herein may be the trademarks of their respective owners.
© 2019 Siemens Industry, Inc.