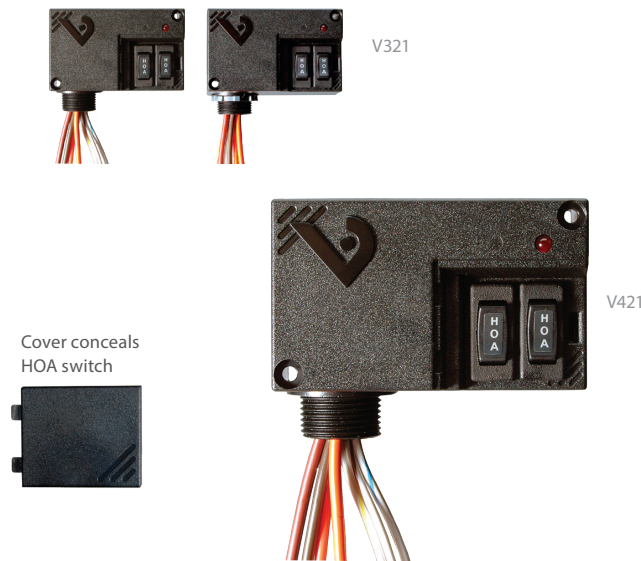


# VICTORY 321 & 421

## HOA Switch Provides Local Control



The Victory 321 and 421 DPST power duty enclosed relays combine an industrial strength relay with installation flexibility. Use the nipple mount to attach to any enclosure. One coil input controls the state of two power rated contacts for simultaneous control of two devices or both poles of a single phase load. Each output is enabled with a Hand-Off-Auto switch for local control. The Victory series does not require a dedicated field enclosure, so it is ideal for retrofit projects. Field-selectable high and low voltage coil inputs provide on-site versatility.

### SPECIFICATIONS

Operating Temp. Range	-40 to 40 °C (-40 to 104 °F)
Operating Humidity Range	10 to 90% RH non-condensing
Expected Relay Life	Electrical (@ rated current) 100,000 cycles; Mechanical (unpowered) 10,000,000 cycles
Relay Status	LED ON=energized
Insulation Class	277 Vac RMS

### WIRE SPECIFICATIONS

Lead Length	14" (356 mm) min.
Gauge	UL1015; Coil: 18 AWG; Contacts: 12 AWG; HOA monitor wires: 16 AWG

### WARRANTY

Limited Warranty	5 years
------------------	---------

### AGENCY APPROVALS

Agency Approvals	UL 508
------------------	--------



### Nipple mount

Can be mounted to any electrical enclosure, easing installation

### Flexible wire

Flexible tinned stranded wire... fits easily in tight spaces and provides secure connections to wire nuts

### Versatile ratings

Versatile coil and contact ratings minimize the number of models to choose

### UL508 Listed

Designed and listed for field installation...makes electrical inspection a snap

### Protective cover

Conceals and protects the HOA switch, reducing the likelihood of tampering

### Sleek enclosure

Reduces the need for panel space

### APPLICATIONS

- Command contactors
- Control motors
- Isolation
- Device interlocking
- Relay logic
- Sense voltages for alarm conditions

#### TYPICAL COIL PERFORMANCE

Voltage	Coil Current	
	AC	DC
24 V	120 mA	64 mA
120 V	84 mA	
277 V	102 mA	

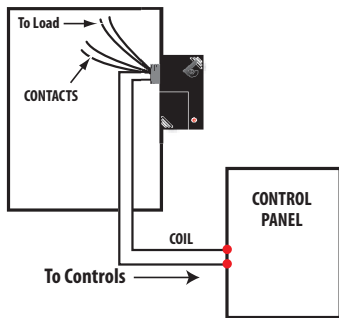
#### CONTACT RATINGS

Resistive	20 A @ 240 Vac
	8 A @ 28 Vac
	14 A @ 14 Vac
Motor	120 Vac, 1 HP

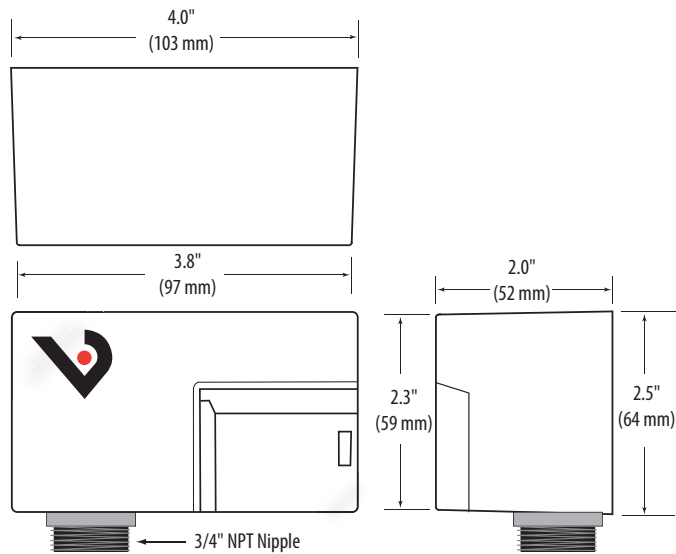


### NIPPLE MOUNT DIRECTLY TO A PANEL

Wiring Diagram

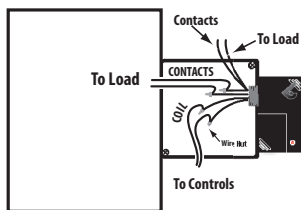


### DIMENSIONAL DRAWING

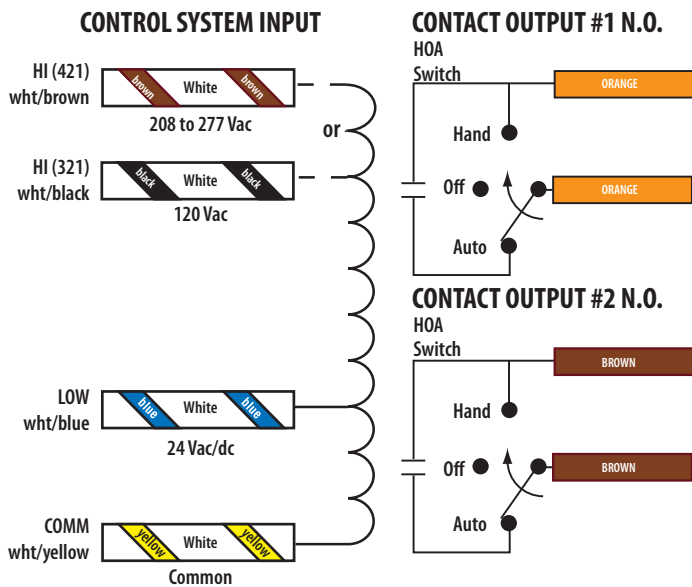


### NIPPLE MOUNT TO ANY 2X OR 4X ELECTRICAL BOX

Wiring Diagram



### WIRE COLOR CODES



### ORDERING INFORMATION

MODEL	RELAY	COIL	AMPERAGE RATING	HOA	RELAY POWER LED	UL
V321	DPST	24 Vac/dc, 120 Vac	20 A	•	•	•
V421		24 Vac/dc, 208 to 277 Vac		•	•	•

Note: Some units are Plenum rated per UL 1995. For details, see White Paper VWP01, *UL 1995 and Plenum Ratings*, at [www.veris.com](http://www.veris.com).

